



# Marlowe Close

East Hunsbury, Northampton

oriordanbond  
SALES & LETTINGS





## Marlowe Close

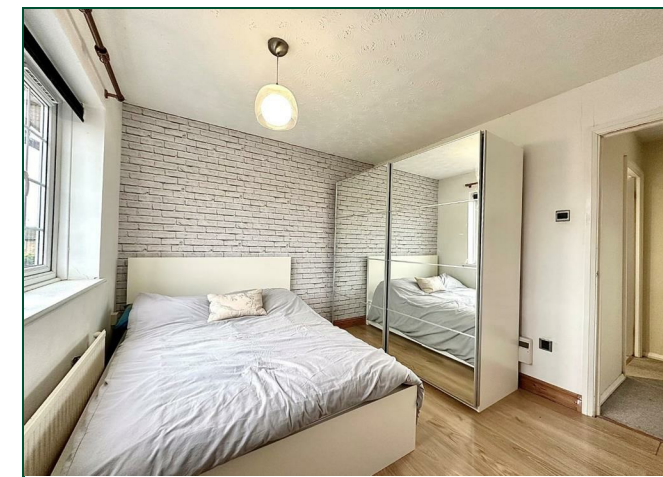
East Hunsbury  
NN4 0QQ

Guide Price  
£375,000

**A well presented, three bedroom detached family home, located in a cul-de-sac with East Hunsbury, occupying a larger than average corner plot, with an outbuilding and parking for five cars.**

This property boasts accommodation over two floors comprising entrance hall with cloakroom/WC, a 15' sitting room with patio doors to the rear garden and a 15' kitchen diner. To the first floor expect to find access to the loft space, three generous bedrooms and a lovely, refitted contemporary shower room. Outside the property sits on a larger than average corner plot with a lawned front garden and block paved driveway for five cars and an attached single garage. The rear garden is a good size offering paved and gravelled seating areas leading to a lawn with planted borders, mature trees, timber fencing to enclose and a fabulous outbuilding which is fully insulated, has air conditioning, double glazed patio doors, veranda and terrace. (B/826/L)

- Detached Family Home
- Three Bedrooms
- Kitchen/Diner
- Large Corner Plot
- Garage and Drive for Five Cars
- 260 sq ft Outbuilding

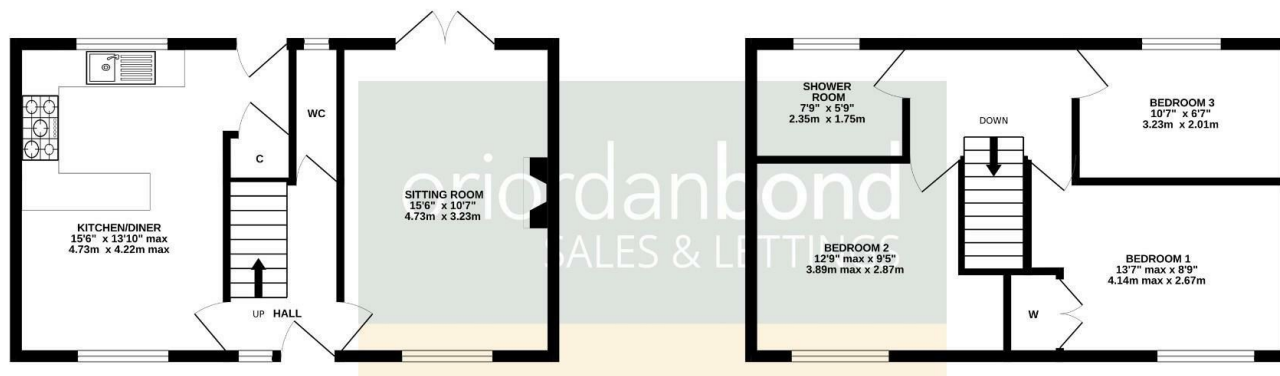




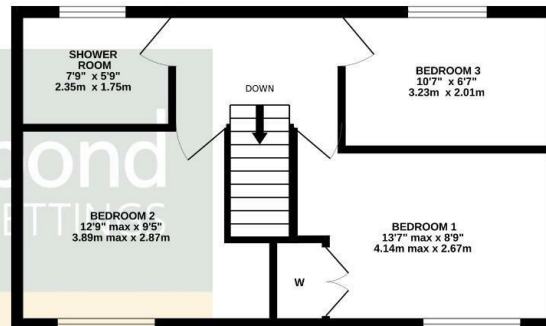




GROUND FLOOR  
411 sq.ft. (38.2 sq.m.) approx.

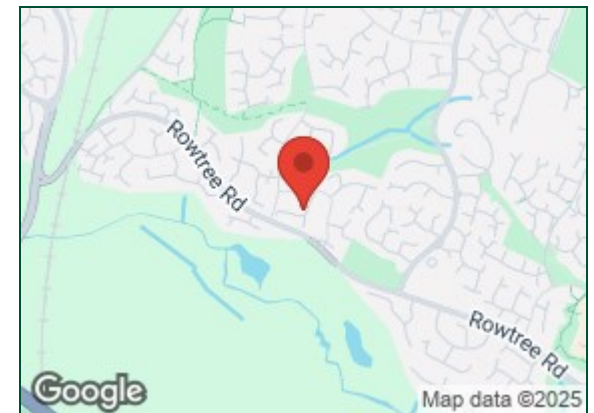


1ST FLOOR  
415 sq.ft. (38.6 sq.m.) approx.



TOTAL FLOOR AREA : 826 sq.ft. (76.7 sq.m.) approx.

Whilst every attempt has been made to ensure the accuracy of the floorplan contained here, measurements of doors, windows, rooms and any other items are approximate and no responsibility is taken for any error, omission or mis-statement. This plan is for illustrative purposes only and should be used as such by any prospective purchaser. The services, systems and appliances shown have not been tested and no guarantee as to their operability or efficiency can be given.  
Made with Metropix ©2024



#### Additional information

- Council Tax Band: D
- Energy Efficiency Rating: C

#### Viewing

Viewing strictly by appointment – details below

#### Disclaimer

O'Riordan Bond Estate Agents Limited has not tested apparatus, equipment, fittings or services and so cannot verify they are in working order. The buyer is advised to obtain verification from their solicitor or surveyor.

**O'Riordan Bond Hunsbury Sales**

**01604 706007**

[hunsbury@oriordanbond.co.uk](mailto:hunsbury@oriordanbond.co.uk)

